

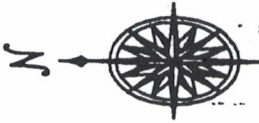
# RECORD OF SURVEY

## SURVEY CERTIFICATE

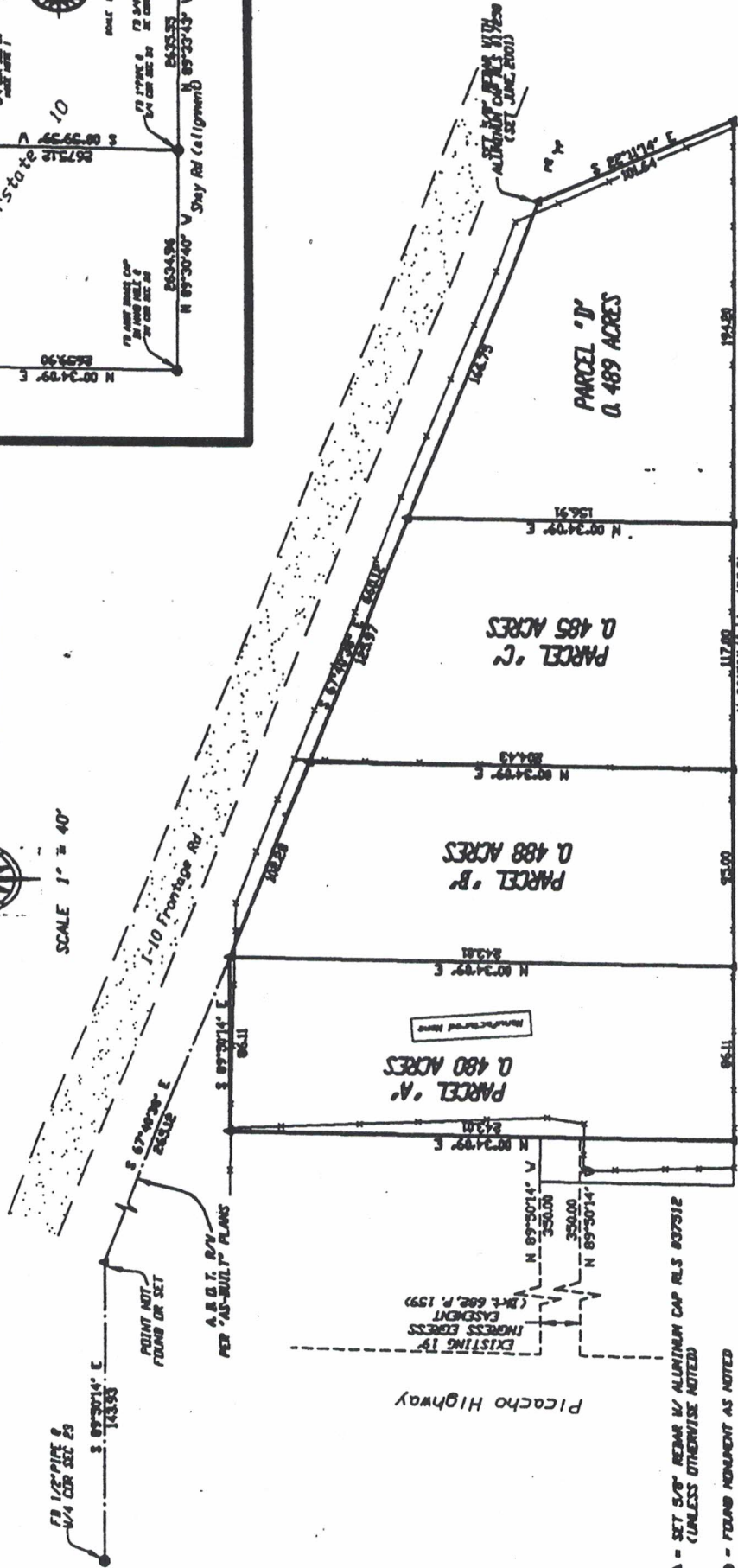
I hereby certify that this survey was done by me or under my direct supervision, that this plat is a true and correct representation of that survey, and that all monuments shown were found or set accurately as indicated hereon.

Date: \_\_\_\_\_  
 Taylor S. Hansen, R.L.S.  
 Registration No. 37512

STATE OF ARIZONA } SS  
 COUNTY OF PINAL } SS  
 I hereby certify that the above instrument is filed in the official records of this County in Book \_\_\_\_\_ Page \_\_\_\_\_  
 Request of \_\_\_\_\_  
 Witness my hand and official seal this \_\_\_\_\_ day of \_\_\_\_\_  
 Laura Stein-Lytle Pinal County Recorder



SCALE 1" = 40'



A = SET 5/8" REBAR W/ ALUMINUM CAP R.L.S. #37512 (UNLESS OTHERWISE NOTED)

● = FOUND MONUMENT AS NOTED

M = POWER POLE

NOTE 1  
 A plumb line was found and accepted as the local C/M corner of Section 23. This monument is referenced on the A.B.C.T. J-10 As-Built plans and matches with fence lines and other survey monuments to the south. A 2" aluminum cap L5800228 was found



**Hansen Engineering**

PROFESSIONAL ENGINEERS AND SURVEYORS  
 COLORADO STATE BOARD OF PROFESSIONAL ENGINEERS AND SURVEYORS  
 (603) 792-3211  
 1524 1/2 ST. 17TH

PROPERTY ZONED CI-2

Deanne Pirble

MINOR LAND DIVISION

Pinal County M.D. NO. 8007

