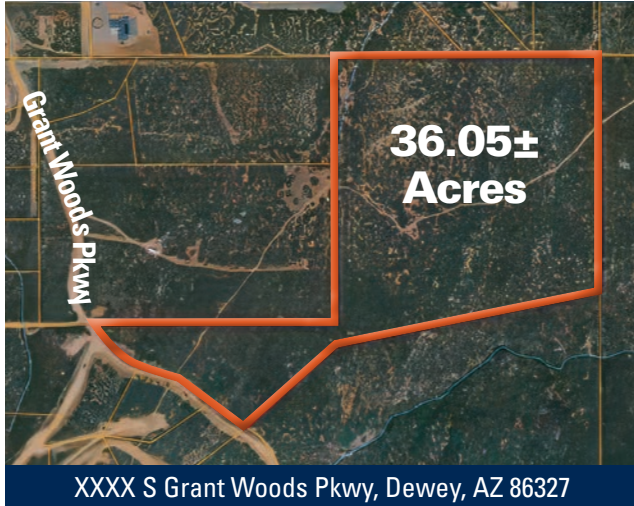


BANK ORDERED NO RESERVE ONLINE AUCTION

36.05± ACRES OF READY-TO-BUILD LAND



This rural residential land, just outside of Prescott, AZ, is being offered at Bank Ordered Online Auction. This is an incredible opportunity to bid on a property with amazing views of mountains and valleys.

- Zoning is Yavapai County (RCU-2A) with a 2-acre minimum lot size and NO HOA!
- Horses are allowed, and it's an excellent riding area.
- The area features new custom upscale homes.
- Easy commute to Phoenix, Flagstaff, and Prescott.
- Underground electric and phone service are available.
- All main roads are double-chip sealed.
- Access through The Estates at Cherry Ridge.
- Yavapai County Assessor #402-13-026-E



SELLING TO THE HIGHEST BIDDER - NO MINIMUMS, NO RESERVES

Bidding Ends: Thursday, Dec 12 • 5 PM

CONTACT US FOR PROPERTY & AUCTION DETAILS



**Arizona
Property
& Auction**

John Payne, Auctioneer/Broker
480-422-6800
John@UnitedCountryAZ.com

EXCLUSIVELY
OFFERED BY:



Stewart Larsen, Auctioneer/Broker
480-861-2530
SLarsen@thelarsencompany.com

A developer's dream and
an investor's delight
REGISTER TO BID TODAY



AZLandAuction.com

BANK ORDERED NO RESERVE ONLINE AUCTION

36.05± ACRES OF READY-TO-BUILD LAND

SELLING TO THE HIGHEST BIDDER - NO MINIMUMS, NO RESERVES



Visit website for full auction terms.
Franchise office is independently owned and operated.

2473 S Higley Rd, Ste 104-120
Gilbert, AZ 85295

PRSR STD
ECRWSS
U.S. POSTAGE
PAID
EDDM RETAIL

**Local
Postal Customer**



Bidding Ends: Thursday, Dec 12 • 5 PM

CONTACT US FOR PROPERTY & AUCTION DETAILS



**Arizona
Property
& Auction**

John Payne, Auctioneer/Broker
480-422-6800
John@UnitedCountryAZ.com

EXCLUSIVELY
OFFERED BY:



Stewart Larsen, Auctioneer/Broker
480-861-2530
SLarsen@thelarsencompany.com

A developer's dream and
an investor's delight
REGISTER TO BID TODAY



AZLandAuction.com